

## SECTION 18

### REMOTE JACK AND FAN ASSEMBLIES

SUB-SECTIONS		
Section		Page
18.1	Technical Description .....	18-1
18.2	Servicing and Alignment .....	18-1
18.3	Component Layout and Schematics .....	18-2
18.4	Parts List .....	18-2
ILLUSTRATIONS		
Figure		Page
18-1	Remote Jack Removal .....	18-1
18-2	Fan Assembly Removal .....	18-1
18-3	Remote Jack Component Layout .....	18-2
18-4	Remote Jack Schematic .....	18-2
18-5	Fan Filter Component Layout .....	18-2
18-6	Fan Filter Schematic .....	18-2

## SECTION 18

### REMOTE JACK AND FAN ASSEMBLIES

#### 18.1 TECHNICAL DESCRIPTIONS

##### 18.1.1 Remote Jack Assembly

The Remote Jack Assembly accepts input from an optional wired remote keypad. Use of this jack disables the use of the IR remote keypad.

##### 18.1.2 Fan Assemblies

The projector has four fans, two mounted to each side panel, to keep the projector electronics cool during operation. Each fan assembly consists of a fan with a passive filter to prevent electrical noise from entering the video and control circuitry.

#### 18.2 SERVICING AND ALIGNMENT

##### 18.2.1 Remote Jack Assembly

###### Disassembly and Access

###### **Module Location:**

- ▶ rear panel card rack

###### **Tools & Equipment Required:**

- ▶ Phillips screw driver

a) Locate the Remote Jack Assembly (to the left side of the rear panel). Remove the two Phillips screws from the Remote Jack back plate.

b) Move the back plate about 2" away from the projector and disconnect the M23-P1 connector. The assembly (with the back plate) may be removed.

c) Remove the two screws securing the Remote Jack Assembly from the back plate.

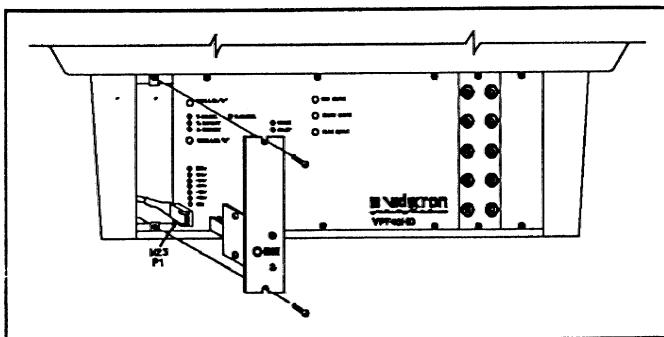


FIGURE 18-1. Remote Jack Removal

02080629

###### Alignment and Adjustments

The Remote Jack Assembly does not require alignment.

##### 18.2.2 Fan Assemblies

###### Disassembly and Access

###### **Module Location:**

- ▶ left and right side panels

###### **Tools & Equipment Required:**

- ▶ 1/4" hex head socket driver

a) Remove the 3 hex head screws securing the side panels to the projector frame. Gently pull each panel down. Move the panels about 3" away from the projector body.

b) The fans are mounted to the side panels (2 each). Each fan is electrically connected to the projector by a wire harness which leads to the Mother Board. Locate the small fan-filter printed circuit board on each Fan Assembly. Disconnect the wire harnesses at the circuit board(s).

c) Remove the two hex nuts which secure the fan to the side panel. See Figure 18-2.

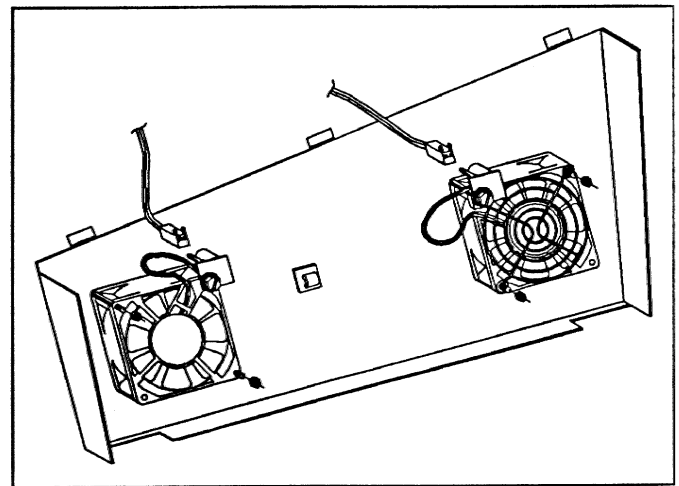


FIGURE 18-2. Fan Removal

02080630

###### Alignment and Adjustments

The Fan Assembly does not require alignment.

18.3 COMPONENT LAYOUT AND SCHEMATICS

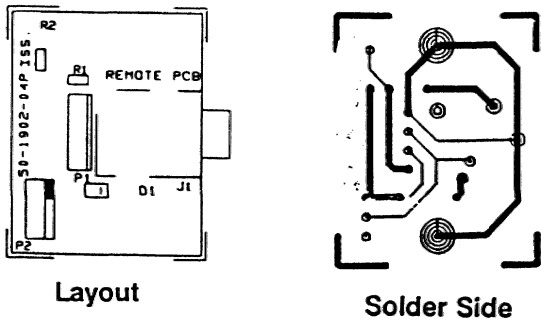


FIGURE 18-3. Remote Jack Component Layout

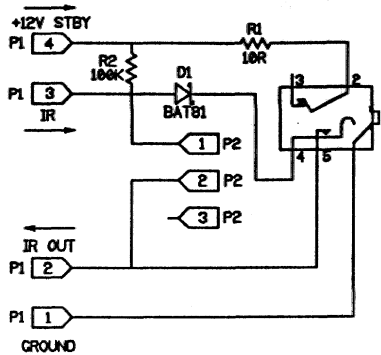


FIGURE 18-4. Remote Jack Schematic  
00-260104-01P

18.4 PARTS LIST

18.4.1 Remote Jack Assembly

Item Ref.	Part No.	Description
<b>Transistors and Diodes</b>		
D1	D-14-000533-01P	BAT81, Schottky barrier diode
<b>Resistors</b>		
R1	R-80-110095-11P	10R, 1/2W, 5%, metal film
R2	R-80-110035-11P	100K, 1/2W, 5%, metal film

18.4.2 Fan Filter

Item Ref.	Part No.	Description
<b>Capacitors</b>		
C1	C-44-447103-06P	470 $\mu$ F, 16V
<b>Resistors</b>		
R1	R-80-130095-11P	30R, 1/2W, 5%, metal film

FIGURE 18-5. Fan Filter Component Layout

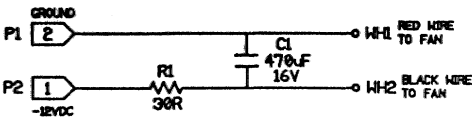


FIGURE 18-6. Fan Filter Schematic  
00-260103-01P